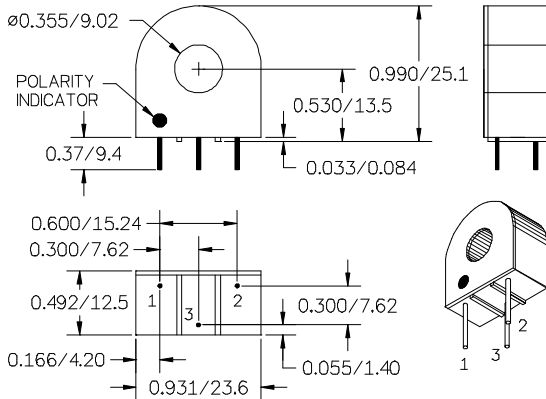




133 A Current Transformer Model S47

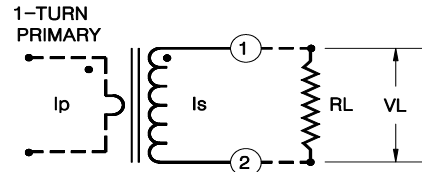
Electrical Specifications:

Turns Ratio: 2000:1 Nominal.
 Rated Current Range: See table below.
 Max output Voltage: 60 Vrms at 60Hz.
 Operating Frequency Range: 20 Hz. - 20 kHz.
 DC Resistance at 20°C: 98 OHMS ± 10%
 Series inductance at 1V, 50Hz.: 16 H MIN.
 Dielectric Withstanding Voltage (DWV): 4 kV



Other Specifications:

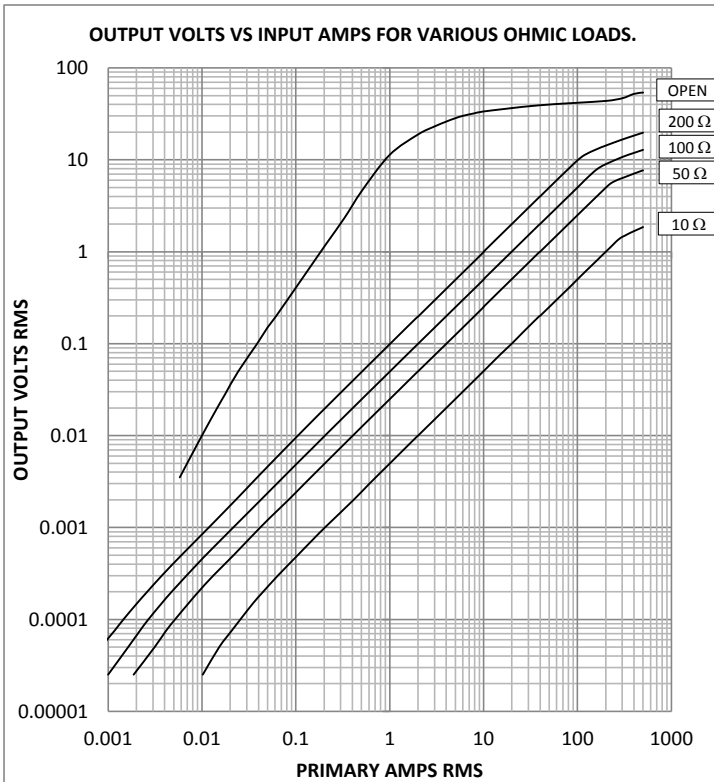
Flammability: Conforms to UL94-V0
 Pins: Tin plated round copper, 0.032" dia (#20 AWG)
 Storage Temp. Range: -55°C- +130°C
 Line current for 30°C temperature rise: 133 A
 Net wt.: 16 gm.
 All dimensions are in inches/mm.
 Tolerance: ± 0.010 / 0.25
 Marking: GMS47 YY-WW (datecode)



I_p : Primary Current
 I_s : Secondary current
 V_L : Output voltage across load R_L
 R_L : Terminating Resistor
 In the linear range,
 $I_p = V_L \times N / R_L \pm 1\%$
 Where N is the nominal ratio
 of the transformer.

Notes:

- Pin 3 is for mechanical support and is not electrically connected.
- The terminating resistor and the one-turn primary are not supplied.
- Dot indicates pin with positive polarity when positive current flows into face with dot on it.
- For Right pin polarity, add -R to P/N. ie. S47-R
- Custom marking available at no extra charge.



Linear Range		
Load R_L	Volts per Amp (V/A)	Current Range for ±1% linearity
10 OHM	0.005	1.0 A - 260 A
50	0.01	1.0 A - 200 A
100	0.05	1.0 A - 140 A
200	0.1	1.0 A - 100 A

Values are for 60 Hz. Reduce top end of current range by 20% at 50 Hz.

General Magnetics Corporation 7 Sagewood Irvine CA 92602

Tel: 1-800-604-0267 Fax: 1-800-604-0297 email: info@generalmagneticscorp.com