



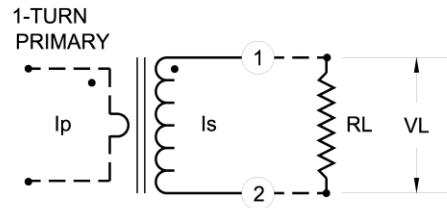
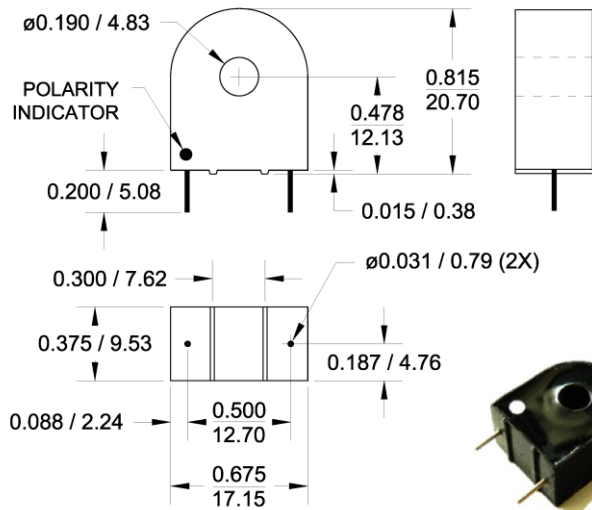
30 A Current Transformer Model S24

Electrical Specifications:

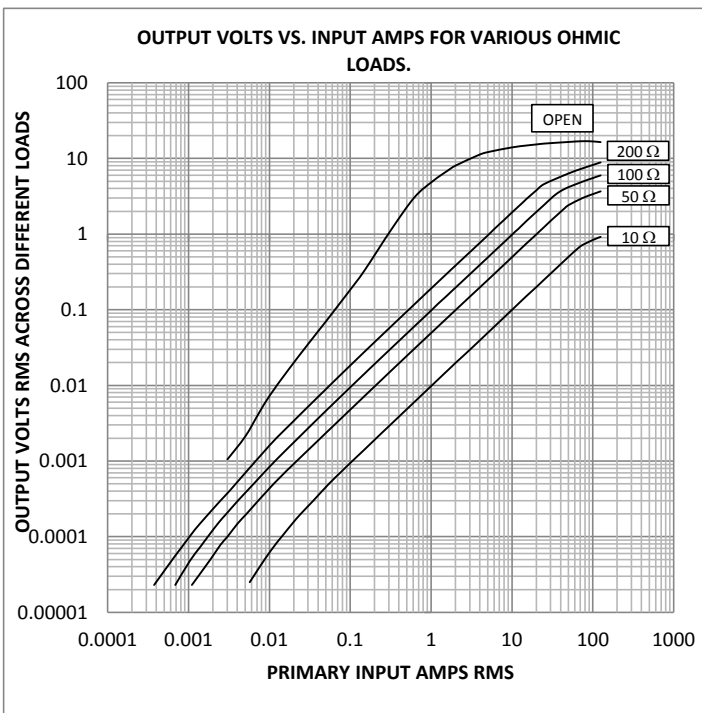
Turns Ratio: 1000:1 Nominal.
 Rated Current: 30 Amps RMS at 60 Hz., 100 Ohms load.
 See table and chart below for other loads.
 Max output Voltage: 20.0 Vrms at 60Hz.
 SRF: 5 kHz. MIN.
 DC Resistance at 20°C: 87 ohms ± 10%
 Series inductance at 1V, 50Hz.: 6.0H MIN.
 Dielectric Withstanding Voltage (DWV): 4 kV

Other Specifications:

Flammability: Conforms to UL94-V0
 Pins: Tin plated round copper, 0.031" dia (#20 AWG)
 Storage Temp. Range: -55°C- +130°C
 Continuous line current for 30°C temperature rise:
 52 A rms
 Net wt.: 6.3 gm. ± 10%
 All dimensions are in inches/mm.
 Tolerance: ± 0.005 / 0.13
 Marking: GMS24 YY-WW (datecode)



I_p : Primary Current
 I_s : Secondary current
 V_L : Output voltage across load RL
 R_L : Terminating Resistor
 In the linear range,
 $I_p = V_L \times N / R_L \pm 1\%$
 Where N is the nominal ratio of the transformer



Notes:

- The terminating resistor and the one-turn primary are not supplied.
- Dot indicates pin with positive polarity when positive current flows into face with dot on it.
- For Right pin polarity, add -R to P/N. ie. S24-R
- Custom marking available at no extra charge.
- Other ratios available upon request.

Linear Range of Operation		
Load RL OHM	Volts per Amp (V/A)	Current Range for ±1% Linearity (A)
10	0.01	1.50 - 65
50	0.05	0.50 - 45
100	0.1	0.50 - 32
200	0.2	0.50 - 20

Values are for 60 Hz. Reduce top end of current range by 20% at 50 Hz and increase by 6.6 x at 400 Hz.

General Magnetics Corporation 7 Sagewood Irvine CA 92602

Tel: 1-800-604-0267 Fax: 1-800-604-0297 email: info@generalmagneticscorp.com