



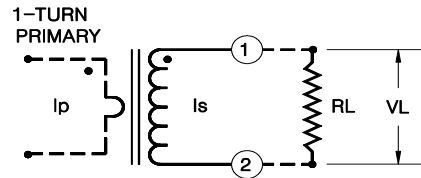
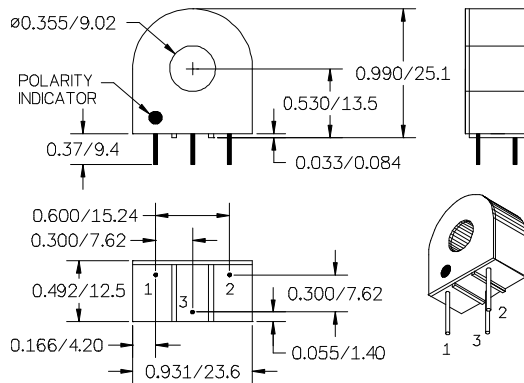
6 A Current Transformer Model R34

Electrical Specifications:

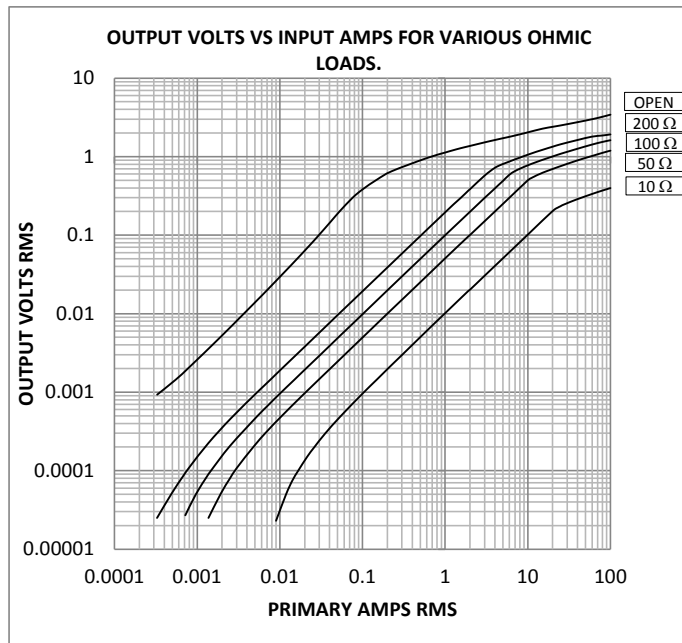
Turns Ratio: 1000:1 Nominal.
 Rated Current listed is for a reference load of 100 ohms.
 See chart and table below for other load values.
 Max output Voltage: 4 Vrms at 60Hz.
 Operating Frequency Range: 20 Hz. - 20 kHz.
 DC Resistance at 20°C: 28 OHMS ± 10%
 Series inductance at 1V, 50Hz.: 4.0 H MIN.
 Dielectric Withstanding Voltage (DWV): 4 kV

Other Specifications:

Flammability: Conforms to UL94-V0
 Pins: Tin plated round copper, 0.032" dia (#20 AWG)
 Storage Temp. Range: -55°C - +130°C
 Temp. rise at 100A load: 5°C typ.
 Net wt.: 16 gm.
 All dimensions are in inches/mm.
 Tolerance: ± 0.010 / 0.25
 Marking: GMR34 YY-WW (datecode)



I_p : Primary Current
 I_s : Secondary current
 V_L : Output voltage across load R_L
 R_L : Terminating Resistor
 In the linear range,
 $I_p = V_L \times N / R_L$
 Where N is the nominal ratio of the transformer



Notes:

- 1: Pin 3 is for mechanical support and is not electrically connected.
- 2: The terminating resistor and the one-turn primary are not supplied.
- 3: Dot indicates pin with positive polarity when positive current flows into face with dot on it.
- 4: For Right pin polarity, add -R to P/N. ie. R34-R

Linear Range		
Load R_L OHM	Volts per Amp (V/A)	Current Range for ±1% linearity
10	0.01	500mA-21A
50	0.05	100mA-10A
100	0.1	100mA-6A
200	0.2	50mA-2.5A

Values are for 60 Hz. Reduce top end of current range by 20% at 50 Hz.

General Magnetics Corporation 7 Sagewood Irvine CA 92602

Tel: 1-800-604-0267 Fax: 1-800-604-0297 email: info@generalmagneticscorp.com