



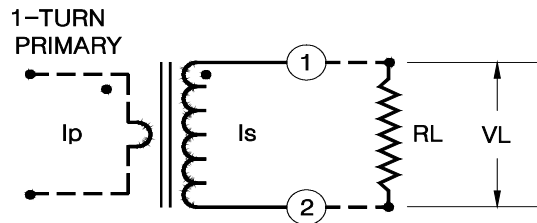
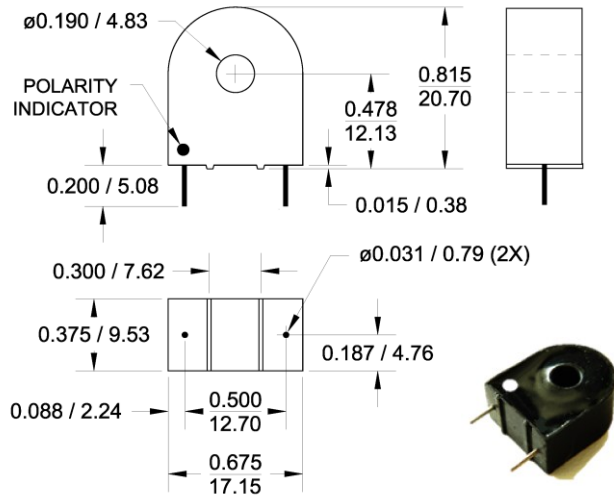
10 A Current Transformer Model R22

Electrical Specifications:

Turns Ratio: 500:1 Nominal.
 Maximum output voltage possible at 60 Hz: 3.0 Vrms.
 Operating Frequency Range: 20 Hz. - 50 kHz.
 SRF: 50 kHz. MIN.
 Rated Current: See chart and table below.
 DC Resistance at 20°C: 12.5 ± 10% OHMS
 Series inductance at 0.1V, 50Hz.: 2.0 H MIN.
 Dielectric Withstanding Voltage (DWV): 4 kV

Other Specifications:

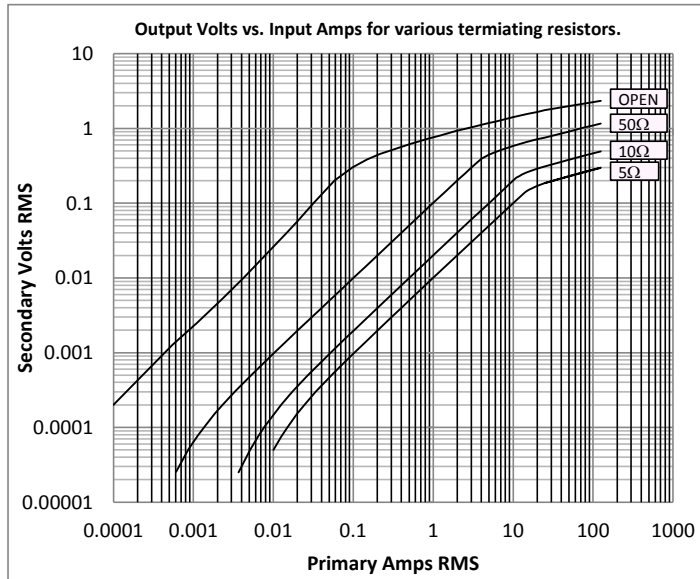
Flammability: Conforms to UL94-V0
 Pins: Tin plated round copper, 0.032" dia (#20 AWG)
 Storage Temp. Range: -55°C- +130°C
 Line current for 30°C temperature rise: 71A rms
 Net wt.: 6.4 gm. ± 10%
 All dimensions are in inches/mm.
 Tolerance: ± 0.005 / 0.13
 Marking: GMR22 YY-WW (datecode)



I_p : primary Current
 I_s : Secondary current
 V_L : Output voltage across load R_L
 R_L : Terminating Resistor
 In the linear range,
 $I_p = V_L \times N / R_L$
 Where N is the nominal ratio of the transformer.

Notes:

- 1: The terminating resistor and the one-turn primary are not supplied.
- 2: Dot indicates pin with positive polarity when positive current flows into face with dot on it.
- 3: For Right pin polarity, add -R to P/N. ie. R22-R
- 4: Custom marking available at no extra charge.
- 5: Other ratios available upon request.



Linear Range of Operation			
Load RL OHM	Volts per Amp (V/A)	Current Range for ±1% linearity(A)	Current Range for ±3% linearity(A)
5	0.01	0.40 - 14	0.15 - 15
10	0.02	0.50 - 11	0.10 - 11
50	0.1	0.10 - 3.0	.015 - 4.0

Values are for 60 Hz. Reduce top end of current range by 20% at 50 Hz.