



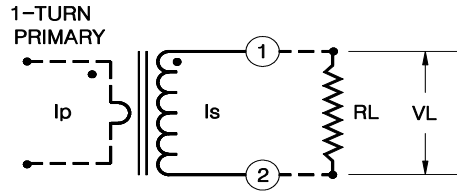
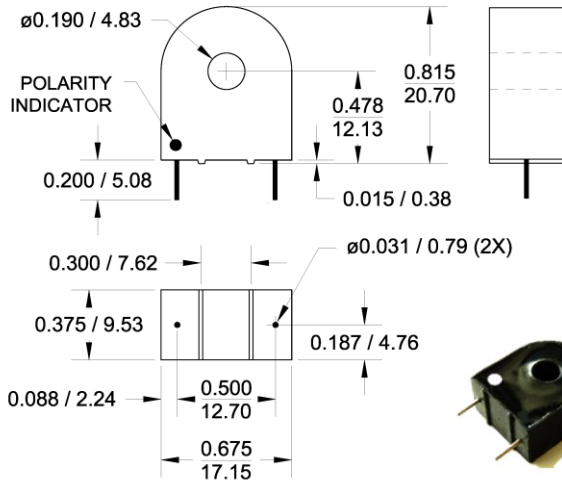
# 8 A Current Transformer Model R124

### Electrical Specifications:

Turns Ratio: 1000:1 Nominal.  
 Rated Current: 8A at 100 ohm, 60Hz. See table and chart below for values at other loads.  
 Max output Voltage: 9 Vrms at 60Hz.  
 Operating Frequency Range: 20 Hz. - 5 kHz.  
 DC Resistance at 20°C: 80 ohms ± 10%  
 Series inductance at 1.0V, 50Hz.: 12 H MIN.  
 Dielectric Withstanding Voltage (DWV): 4 kV

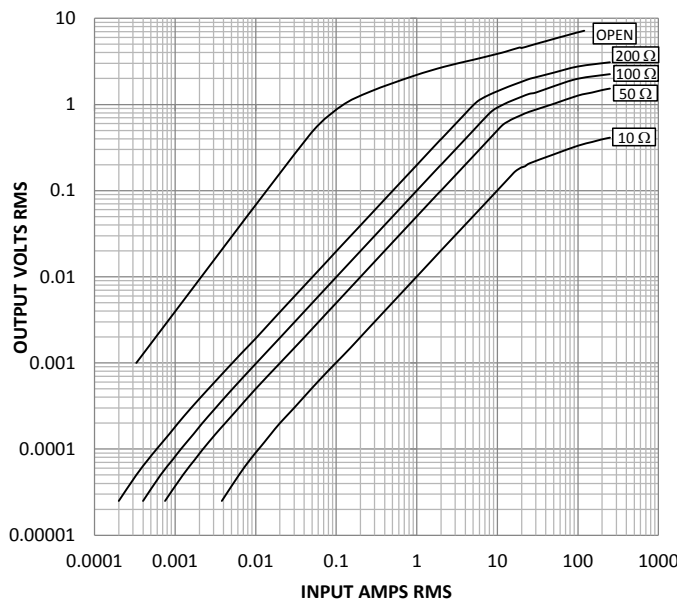
### Other Specifications:

Flammability: Conforms to UL94-V0  
 Pins: Tin plated round copper, 0.032" dia (#20 AWG)  
 Storage Temp. Range: -55°C- +130°C  
 Load current for 30°C temperature rise: 62 A  
 Net wt.: 6.7 gm. ± 10%  
 All dimensions are in inches/mm.  
 Tolerance: ± 0.005 / 0.13  
 Marking: GMR124 YY-WW (datecode)



$I_p$ : Primary Current  
 $I_s$ : Secondary current  
 $V_L$ : Output voltage across load  $R_L$   
 $R_L$ : Terminating Resistor  
 In the linear range,  
 $I_p = V_L \times N / R_L$   
 Where N is the nominal ratio of the transformer.

OUTPUT VOLTS VS. INPUT AMPS FOR VARIOUS OHMIC LOADS.



### Notes:

- 1: The terminating resistor and the one-turn primary are not supplied.
- 2: Dot indicates pin with positive polarity when positive current flows into face with dot on it.
- 3: For Right pin polarity, add -R to P/N. ie. R124-R
- 4: Custom marking available at no extra charge.
- 5: Other ratios available upon request.

Linear Range of Operation		
Load $R_L$ OHM	Volts per Amp (V/A)	Current Range for ±1% Accuracy
10	0.01	20 mA - 17 A
50	0.05	10 mA - 11 A
100	0.1	40 mA - 8 A
200	0.2	25 mA - 5 A

Values are for 60 Hz. Reduce top end of current range by 20% at 50 Hz.

**General Magnetics Corporation 7 Sagewood Irvine CA 92602**

Tel: 1-800-604-0267 Fax: 1-800-604-0297 email: info@generalmagneticscorp.com