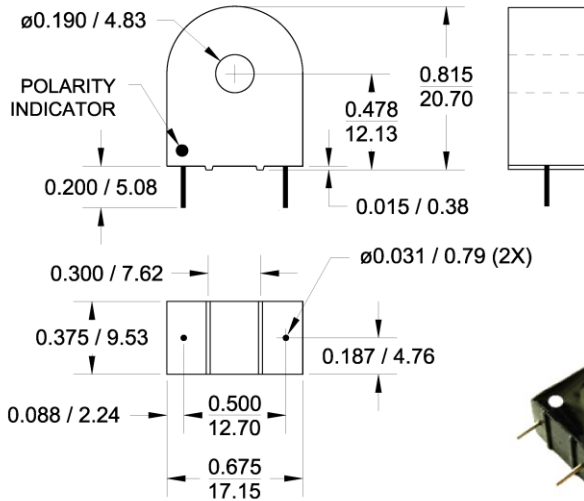




18A Current Transformer Model N17

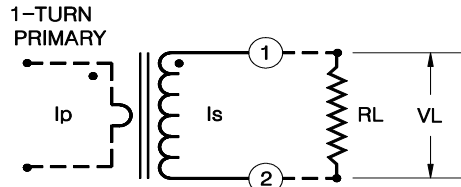
Electrical Specifications:

Turns Ratio: 2000:1 Nominal.
 Rated Current is at 100 ohm load. See table and chart below for rated current at other loads.
 Max output Voltage: 12.0 Vrms at 60Hz.
 Operating Frequency Range: 20 Hz. - 5 kHz.
 SRF: 5 kHz. MIN.
 DC Resistance at 20°C: 157 ohms \pm 10%
 Series inductance at 1.0V, 50Hz.: 100 H MIN.
 Dielectric Withstanding Voltage (DWV): 4 kV



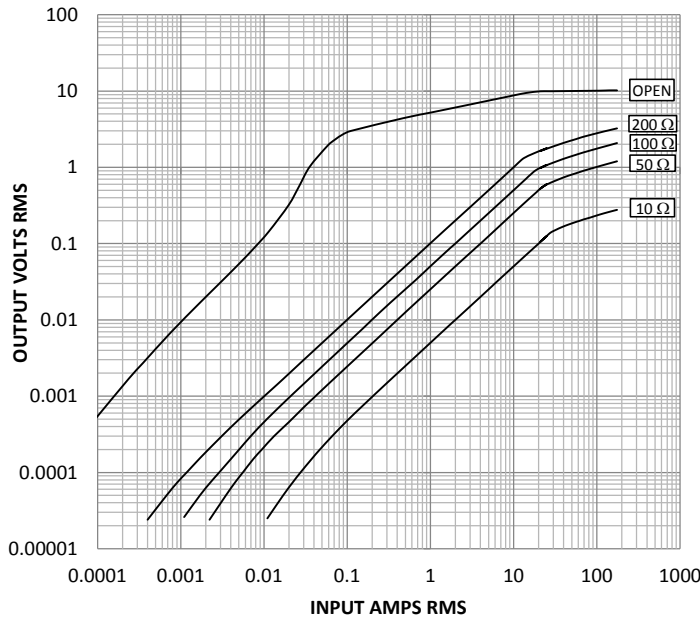
Other Specifications:

Flammability: Conforms to UL94-V0
 Pins: Tin plated round copper, 0.032" dia (#20 AWG)
 Storage Temp. Range: -55°C - +130°C
 Load current for 30°C temperature rise: 78 A
 Net wt.: 6.5 gm. Typ.
 All dimensions are in inches/mm.
 Tolerance: \pm 0.005 / 0.13
 Marking: GMN17 YY-WW (datecode)



I_p : Primary Current
 I_s : Secondary current
 V_L : Output voltage across load R_L
 R_L : Terminating Resistor.
 In the linear range,
 $V_L = I_p X R_L / N$
 Where N is the nominal ratio of the transformer.

OUTPUT VOLTS VS. INPUT AMPS FOR VARIOUS OHMIC LOADS.



Notes:

- 1: The terminating resistor and the one-turn primary are not supplied.
- 2: Dot indicates pin with positive polarity when positive current flows into face with dot on it.
- 3: For Right pin polarity, add -R to P/N. ie. N17-R
- 4: Custom marking available at no extra charge.
- 5: Other ratios available upon request.

Linear Range of Operation

Load R_L OHM	Volts per Amp (V/A)	Current Range for $\pm 1\%$ Accuracy
10	0.005	0.3 A - 28 A
50	0.025	0.5 A - 22 A
100	0.05	0.1 A - 18 A
200	0.1	10 mA - 13 A

Values are for 60 Hz. Reduce top end of current range by 20% at 50 Hz.

General Magnetics Corporation 7 Sagewood Irvine CA 92602

Tel: 1-800-604-0267 Fax: 1-800-604-0297 email: info@generalmagneticscorp.com