



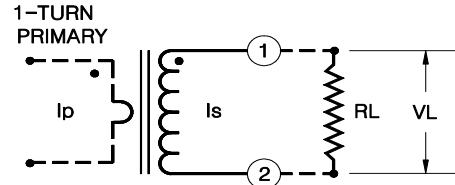
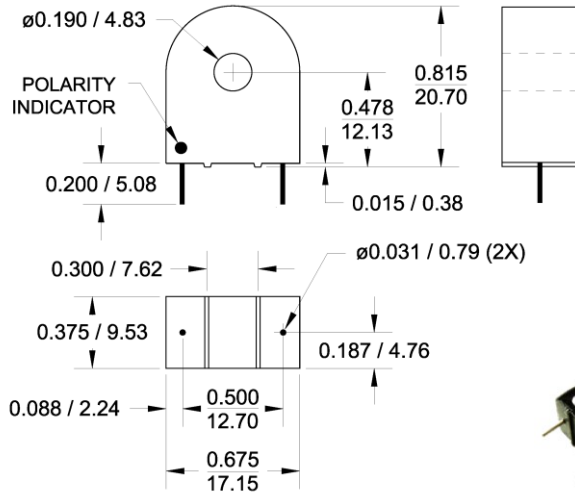
5 A Current Transformer Model N12

Electrical Specifications:

Turns Ratio: 500:1 Nominal.
 Rated Current for a resistive load of 50 ohms: 5A, 60Hz.
 See chart and table below for rated currents at other loads.
 Max output Voltage possible: 2.5 Vrms at 60Hz.
 Operating Frequency Range: 20 Hz. - 5 kHz.
 DC Resistance at 20°C: 12.5 ohms ± 10%
 Series inductance at 0.10V, 50Hz.: 5H MIN.
 Dielectric Withstanding Voltage (DWW): 4 kV

Other Specifications:

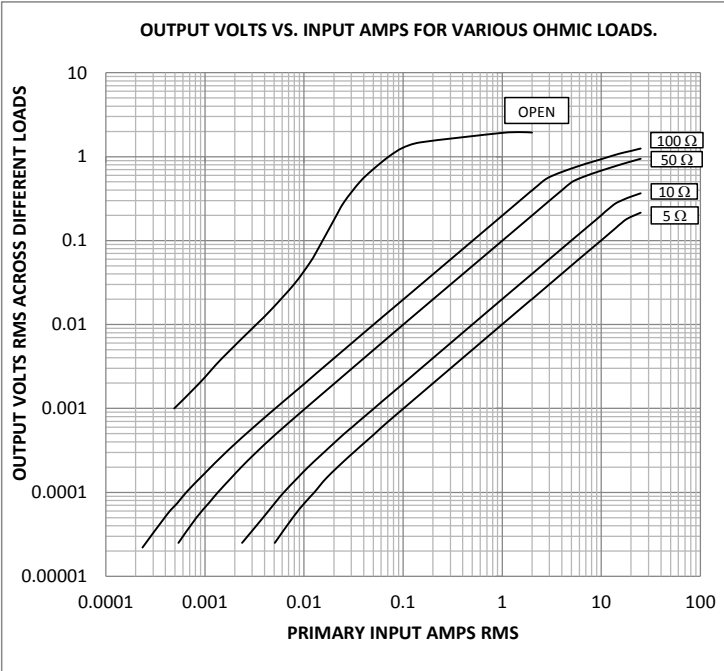
Flammability: Conforms to UL94-V0
 Pins: Tin plated round copper, 0.032" dia (#20 AWG)
 Storage Temp. Range: -55°C - +130°C
 Line current for 30°C temperature rise: 68 A rms
 Net wt.: 6.5 gm.
 All dimensions are in inches/mm.
 Tolerance: ± 0.005 / 0.13
 Marking: GMN13 YY-WW (datecode)



I_p : Primary Current
 I_s : Secondary current
 V_L : Output voltage across load R_L
 R_L : Terminating Resistor
 In the linear range,
 $I_p = V_L \times N / R_L$
 Where N is the nominal ratio of the transformer.

Notes:

- 1: The terminating resistor and the one-turn primary are not supplied.
- 2: Dot indicates pin with positive polarity when positive current flows into face with dot on it.
- 3: For Right pin polarity, add -R to P/N. ie. N12-R
- 4: Custom marking available at no extra charge.
- 5: Other ratios available upon request.



Linear Range of Operation		
Load R_L OHM	Volts per Amp (V/A)	Current Range for ± 1% Accuracy
5	0.01	0.080 - 18.0
10	0.02	0.060 - 14.0
50	0.1	0.030 - 5.00
100	0.2	0.010 - 2.70

Values are for 60 Hz. Reduce top end of current range by 20% at 50 Hz.

General Magnetics Corporation 7 Sagewood Irvine CA 92602

Tel: 1-800-604-0267 Fax: 1-800-604-0297 email: info@generalmagneticscorp.com