



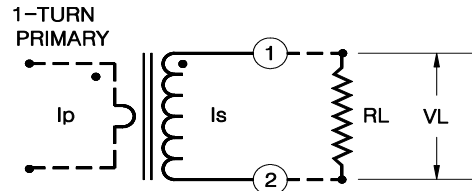
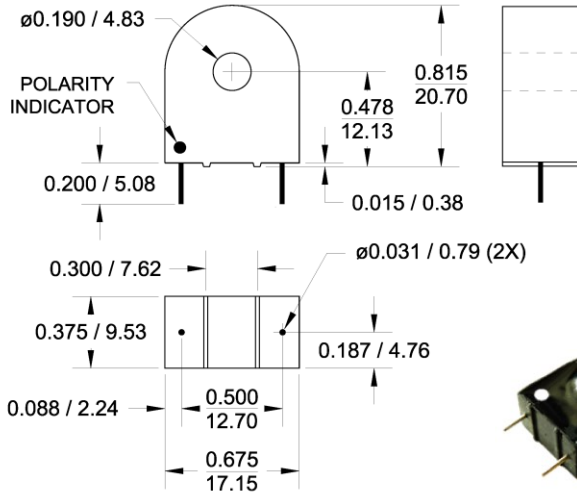
30 A Wide Range Current Transformer Model C27

Electrical Specifications:

Turns Ratio: 2000:1 Nominal.
 Nominal Load: 100 Ohms.
 See chart and table below for rated currents at other loads.
 Maximum output Voltage: 15.0 Vrms at 60Hz.
 Operating Frequency Range: 20 Hz. - 5 kHz.
 DC Resistance at 20°C: 182 ohms ± 10%
 Series inductance at 0.1V to 1V, 50Hz.: 4H MIN.
 Dielectric Withstanding Voltage (DWV): 1.5 kV

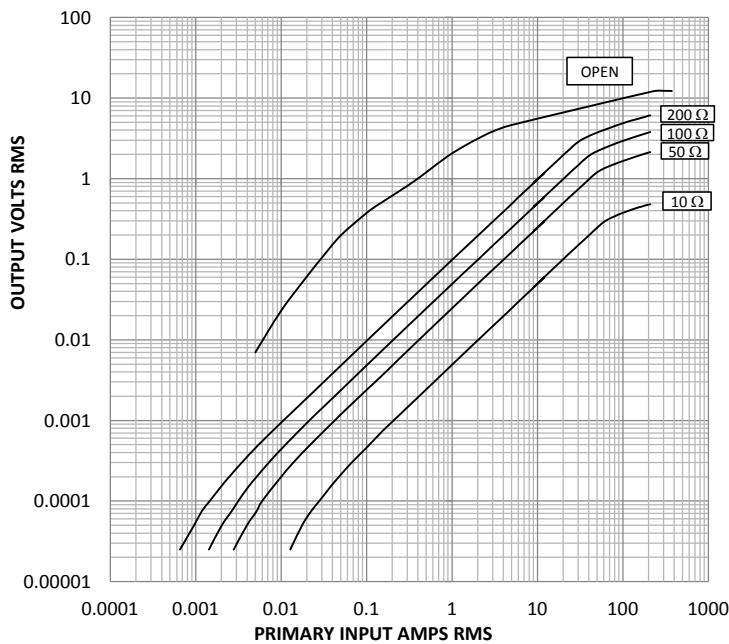
Other Specifications:

Flammability: Conforms to UL94-V0
 Pins: Tin plated round copper, 0.032" dia (#20 AWG)
 Storage Temp. Range: -55°C- +130°C
 Current for 30°C temp. rise: 78 A rms
 Net wt.: 8.2 gm.
 All dimensions are in inches/mm.
 Tolerance: ± 0.005 / 0.13
 Marking: GMC27 YY-WW (datecode)



I_p : Primary Current
 I_s : Secondary current
 V_L : Output voltage across load R_L
 R_L : Terminating Resistor
 In the linear range,
 $I_p = V_L \times N / R_L$
 Where N is the nominal ratio of the transformer

OUTPUT VOLTS VS. INPUT AMPS FOR VARIOUS OHMIC LOADS.



Notes:

- 1: The terminating resistor and the one-turn primary are not supplied.
- 2: Dot indicates pin with positive polarity when positive current flows into face with dot on it.
- 3: For Right pin polarity, add -R to P/N. ie. C27-R
- 4: Custom marking available at no extra charge.
- 5: Other ratios available upon request.

Linear Range of Operation			
Load R_L	Volts per Amp.	Current Range for ± 1% Accuracy Amp.	Current Range for ± 3% Accuracy Amp.
OHM	V/A		
10	0.005	1.5 - 52	0.2 - 60
50	0.025	0.6 - 42	0.2 - 48
100	0.05	0.3 - 34	0.1 - 40
200	0.1	0.1 - 27	0.03 - 30

Values are for 60 Hz. Reduce top end of current range by 20% at 50 Hz.

General Magnetics Corporation 7 Sagewood Irvine CA 92602

Tel: 1-800-604-0267 Fax: 1-800-604-0297 email: info@generalmagneticscorp.com